



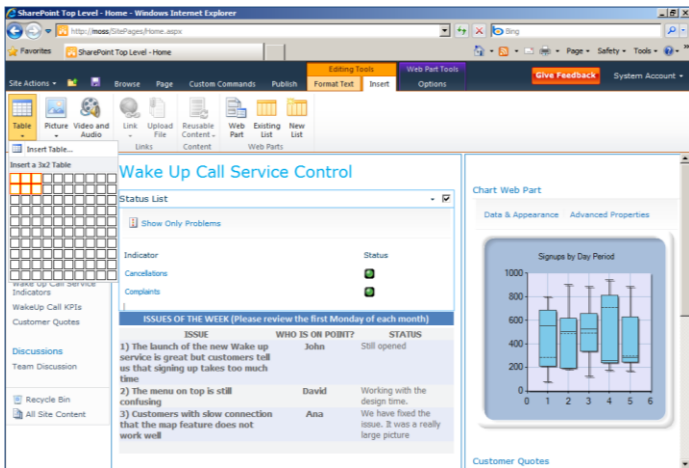
SharePoint 2010 Composites: Do-It-Yourself Business Solutions

Microsoft® SharePoint® 2010 Composites provides building blocks that you can use to assemble, connect, and configure collaborative business solutions. From simple sites to complex applications, you can rapidly respond to specific business needs with custom solutions.

In the past, developers built composite applications by combining pre-existing components and services to create new solutions. SharePoint 2010 Composites makes it easier for people with different skill levels—not just developers—to create these custom solutions. With SharePoint 2010 Composites, anyone can assemble out-of-the-box building blocks in new and interesting ways directly on the browser. Technical users can create richer SharePoint solutions using more advanced tools, and IT Pros can continue to control the infrastructure, data, and applications.

Rapidly Create SharePoint Solutions without Code

You don't need to be a programmer to use the building blocks in SharePoint 2010. Even without code, you can create highly customized sites and solutions: Share Microsoft Visio® diagrams and Microsoft Access databases. Use Microsoft SharePoint Designer 2010 and Microsoft InfoPath® to design solutions based on workflows and forms. You'll be surprised by how many of your business challenges can be resolved with a code-free solution.



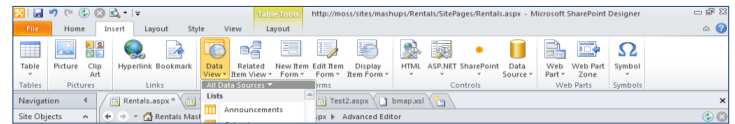
Microsoft SharePoint Server 2010 enables rich, browser-based customization.

Browser-Based Customizations

From calendars and tasks to charts and business data, SharePoint 2010 Composites gives you a rich set of building blocks to quickly create collaborative solutions directly in the browser. Plus, anyone can build solutions with confidence using the simplified commands on the SharePoint Ribbon, Web edit, and out-of-the-box workflows and Web Parts for a variety of common scenarios.

Microsoft SharePoint Designer

Create advanced, no-code solutions with the improved user interface and expanded capabilities of SharePoint Designer 2010. Quickly build solutions without code using list and content type editors, association columns, reusable workflows, impersonation steps, XSLT templates, and external content types from Business Connectivity Services (BCS). You can even control when and how people use SharePoint Designer with new security and administration settings.



SharePoint Designer 2010 includes an improved user experience.

Workflows

With out-of-the-box workflows, you can create common tasks like approvals and reviews. Create custom workflows in SharePoint Designer or in the workflow designer in Visio, and manage these business process diagrams in a central repository.



Import workflows from Visio diagrams.

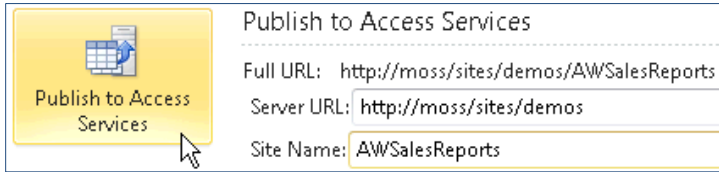
InfoPath Forms Services

Customize Form Create rich forms to gather information quickly and cost effectively, and build form-based SharePoint applications with InfoPath. Design rich Web browser forms that can be more easily managed on the server, or build advanced forms that connect to line-of-business systems.



Access Services

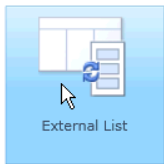
Share and publish Microsoft Access databases to SharePoint 2010. With Access Services, you can eliminate database versioning problems, simplify the deployment of forms and reports, and streamline the management of these database solutions.



Unlock the Value of Your Enterprise Data

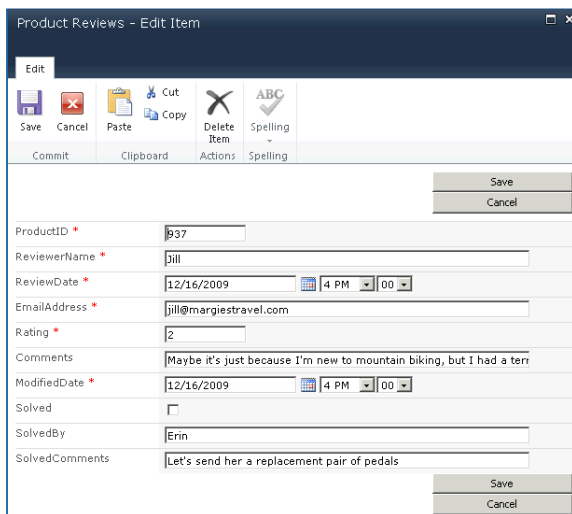
With SharePoint 2010 Composites, you can work with data from other systems as if it lived in SharePoint. Create, read, update, delete, and search the data using external lists. Work with it online in a browser or in Microsoft Office. Can't get connected? Use Microsoft SharePoint Workspace to work offline and synchronize your changes when you reconnect.

Business Connectivity Services



Business Connectivity Services helps your people work with enterprise data as easily as they work with SharePoint data. They can use Microsoft Outlook®, Microsoft Word, or SharePoint Workspace to create, read, update, delete, and search enterprise data through external lists, even

when they're not connected to the network. Plus, IT Pros can easily and securely surface enterprise data sources without code, based on .NET assemblies, Web services, or Microsoft SQL Server® through external content types.



Interact with data in external systems as easily as you do in SharePoint.

Maintain Control over End-User Solutions

SharePoint 2010 Composites helps you centralize and manage business solutions so that your people can get their jobs done and you can save time and effort. For example, you can:

- Centralize Access databases and Microsoft Excel® workbooks and deploy them from SharePoint.
- Provide controlled access to company data.
- Deploy safe Sandbox Solutions to SharePoint without risking the health of the platform.
- Use the time and effort you saved to focus on higher IT priorities.

Sandbox Solutions

With Sandbox Solutions, your people can deploy custom code, but you can manage the resources and capabilities they can use.



For More Information

Learn more about SharePoint 2010 Composites at www.microsoft.com/sharepoint.

This document is for informational purposes only. MICROSOFT MAKES NO WARRANTIES, EXPRESS OR IMPLIED, IN THIS SUMMARY.

The example companies, organizations, products, domain names, e-mail addresses, logos, people, places, and events depicted herein are fictitious. No association with any real company, organization, product, domain name, e-mail address, logo, person, place, or event is intended or should be inferred.

© 2010 Microsoft Corporation. All rights reserved. Microsoft, Excel, InfoPath, Outlook, SharePoint, SQL Server, and Visio are trademarks of the Microsoft group of companies. All other trademarks are property of their respective owners.